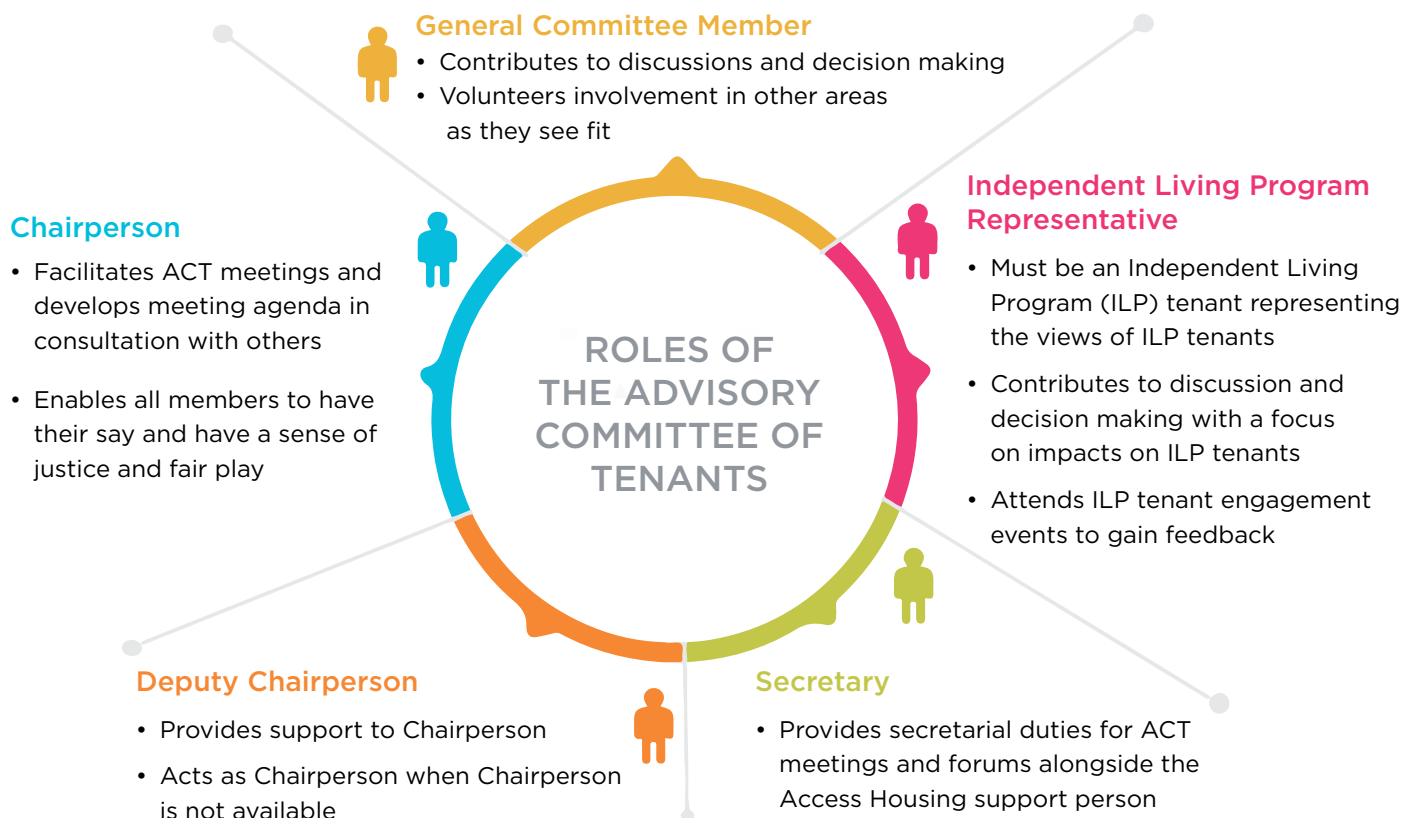


## ROLES OF THE ACT



## HEAR FROM MEMBERS OF THE ACT!

### TRISH - CHAIRPERSON

*"I am excited about the opportunity for the ACT to provide a platform for communication between Access Housing and its community of tenants. I feel assured that Access Housing is genuine in their commitment to making a difference in our lives as tenants."*

### MELANIE - GENERAL COMMITTEE MEMBER

*"I feel strongly about being able to represent tenants with disabilities and be a voice for those who feel they can't speak up. I believe everyone has the right to appropriate and suitable housing. It is an honour to be involved."*

### ANTON - INDEPENDENT LIVING PROGRAM REPRESENTATIVE

*"I have been living nearly 20 years with mental health issues and have never before had this kind of opportunity to try to improve the system. I know that listening to tenant experiences would benefit tenants and Access Housing."*



#### Head / Metro Office

Level 7, 25 Rowe Avenue  
Rivervale WA 6103  
PO Box 105  
Burswood WA 6100  
P (08) 9430 0900  
E [info@accesshousing.org.au](mailto:info@accesshousing.org.au)  
Office Hours (Mon-Fri): 8.30am-4pm

#### Peel Office

4 Stevenson Street  
PO Box 1200  
Mandurah WA 6210  
P (08) 9534 0400  
E [mandurah@accesshousing.org.au](mailto:mandurah@accesshousing.org.au)  
Office Hours (Mon-Fri): 8.30am-4pm

#### South West Office

1st Floor, 25 Victoria Street  
PO Box 1539  
Bunbury WA 6230  
P (08) 9722 7200  
E [bunbury@accesshousing.org.au](mailto:bunbury@accesshousing.org.au)  
Office Hours (Mon-Fri): 8.30am-4pm